

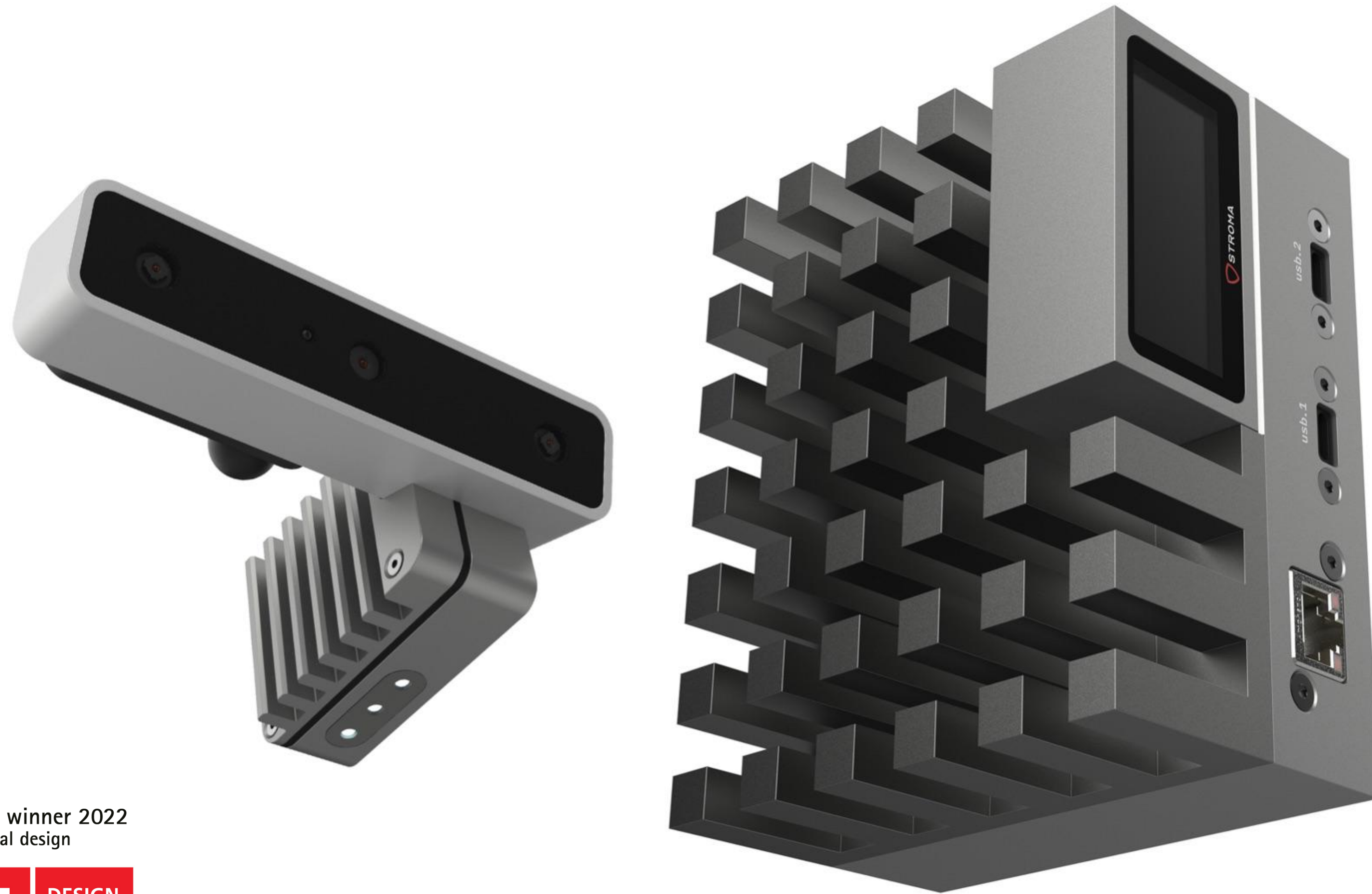


Vision-Based Safety at the Edge

We empower occupational safety teams with:

- ✓ Detecting anomalies for safety compliance
- ✓ Providing real-time notifications in risky situations and behaviors
- ✓ Rapid implementation of risk mitigation procedures

Start Your Proactive Safety Journey



Plug-and-play edge devices to analyze advanced physiological data such as **fatigue, distraction** and **ergonomics** of your workers in real-time in any work environment



reddot winner 2022
industrial design



Red Dot Design Award 2022 - Stroma WorkSafe Worker Safety Camera System: <https://www.red-dot.org/project/worksafe-58214>

iF Design Award 2022 - Stroma WorkSafe Worker Safety Camera System: <https://ifdesign.com/en/winner-ranking/project/stroma-worksafe/350165>

Workplace Safety Modules

See the potential of the harmony of your cameras and real-time data processing with our devices at the edge

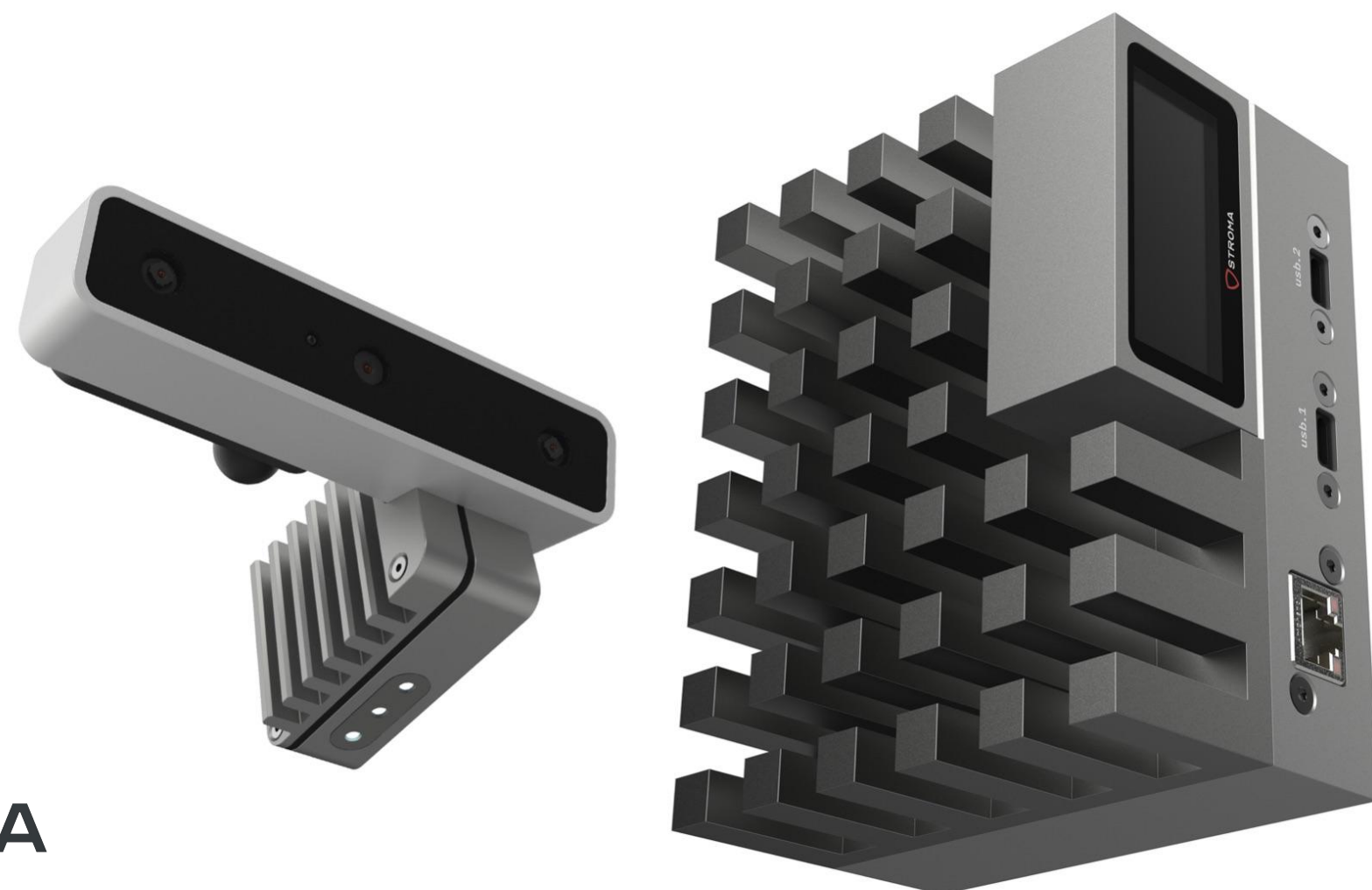


Base Modules

- PPE Compliance
- Workplace Intelligence
- Dashboard & Reporting

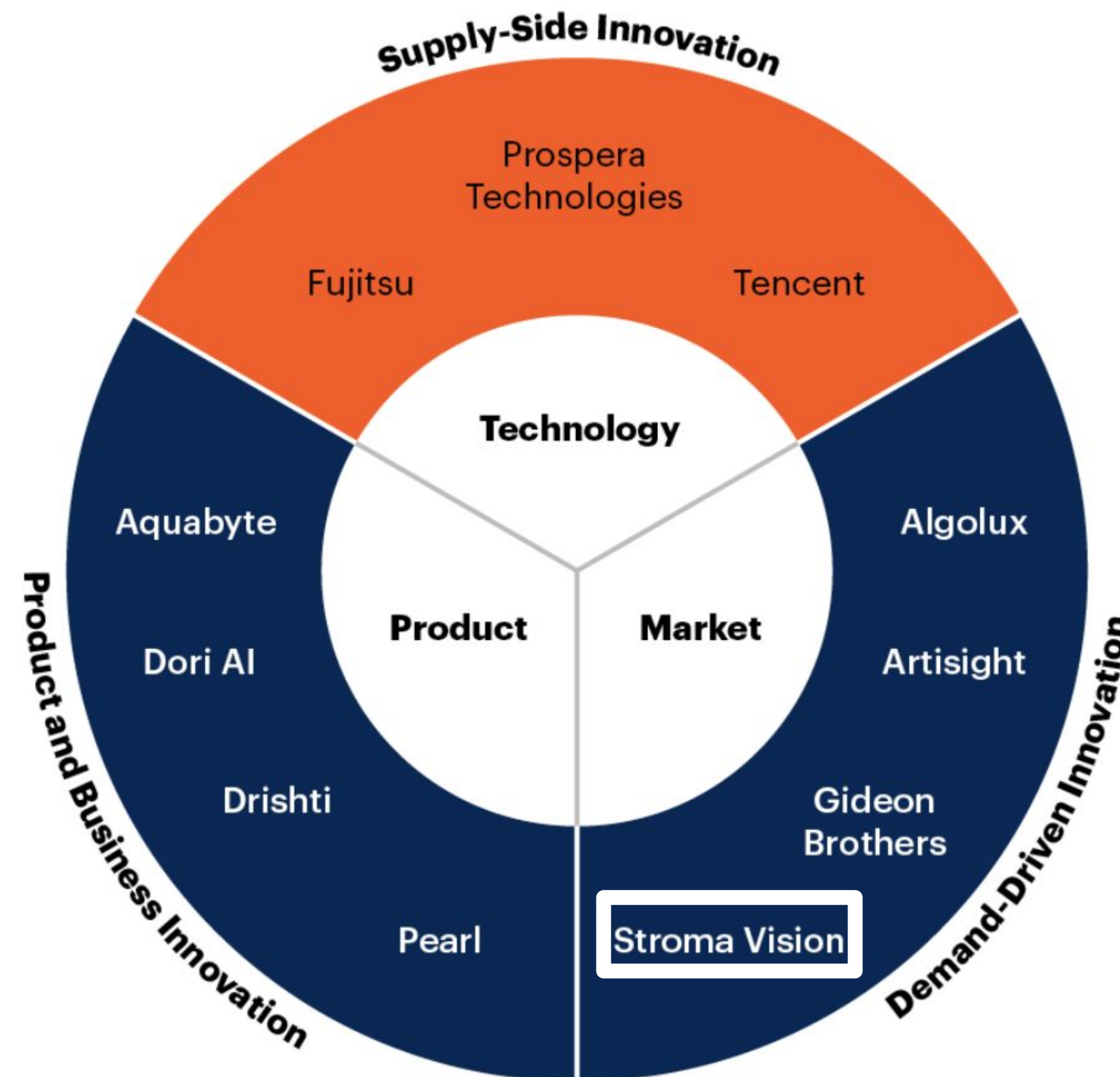
Advanced Modules

- Fatigue & Distraction Monitoring
- Ergonomic Risk Analysis
- Privacy-Aware Authentication



Emerging Technologies: Tech Innovators in Machine Vision – Demand Side

Published 17 August 2021 - ID G00754456



Putting Data Privacy & Security at the Center

As we process all images on-device we ensure **no data ever leaves the premises.**

We built our notification and deployment services as **zero knowledge services.**

So to the best of our knowledge there is not a single opportunity where our engineers or anyone accessing our network can reach accident data, video feeds within the deployment area or unencrypted training datasets.

