



# A new way of working for safety teams

Capitalizing on real-time leading indicators, Intenseye provides a comprehensive solution for managing unsafe acts and conditions revolutionizing the way safety teams operate.

Unilever



SWIRE COCA-COLA



SUNTORY  
SUNTORY BEVERAGE & FOOD



AngloAmerican



arçelik

SIEMENS

AKWEL



BORÇELİK



GROUPE  
ATLANTIC

MAGNA

LINDSAY  
Customer-first Innovation. Real-world solutions.

# A complete EHS platform powered by **cutting-edge AI**

Deploy cutting-edge computer vision in your workplace. Whether it's PPE usage, body positioning assessments or vehicle interaction, our software is ready to work for you.

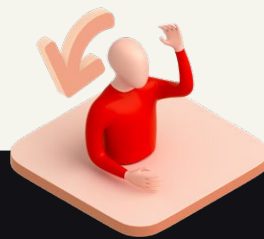
## Intenseye Products

**No hardware, no sensor, no installation.**



### Core AI

AI technology for wide-ranging EHS solutions.



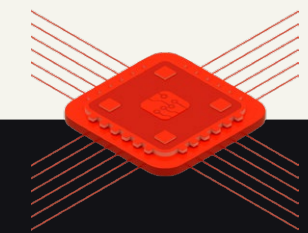
### Ergonomics

Continuous scoring for our continuously working bodies.



### EHS Platform

Data-driven, actionable insights for enhanced safety.



### Industrial Integrations

Integrations with IoT devices, APIs, and on-site services.

# End-to-end EHS Software

A **fully-built software platform** integrates with **over 200 camera make and models** seamlessly. Select & scale your use cases and camera counts **on the cloud, instantly**.

## 1 Connect

In-house built client software integrates with existing camera systems within minutes.



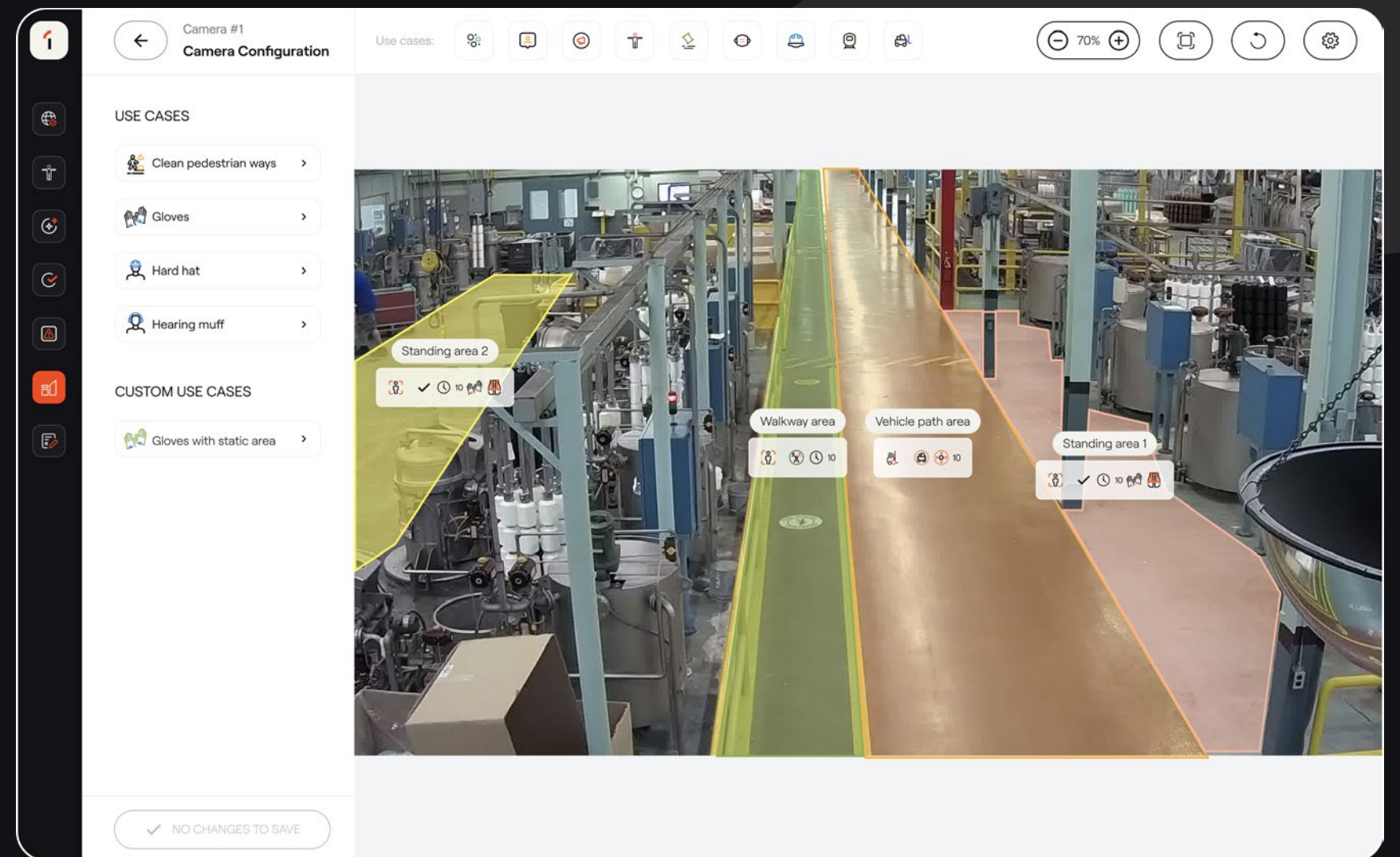
## 2 Deploy

Select from 50+ ready-to-go EHS rules to easily customize and prioritize for each facility/camera.



## 3 Protect

Instant dashboard, email, SMS and smart device notifications with alert snapshot and summary.

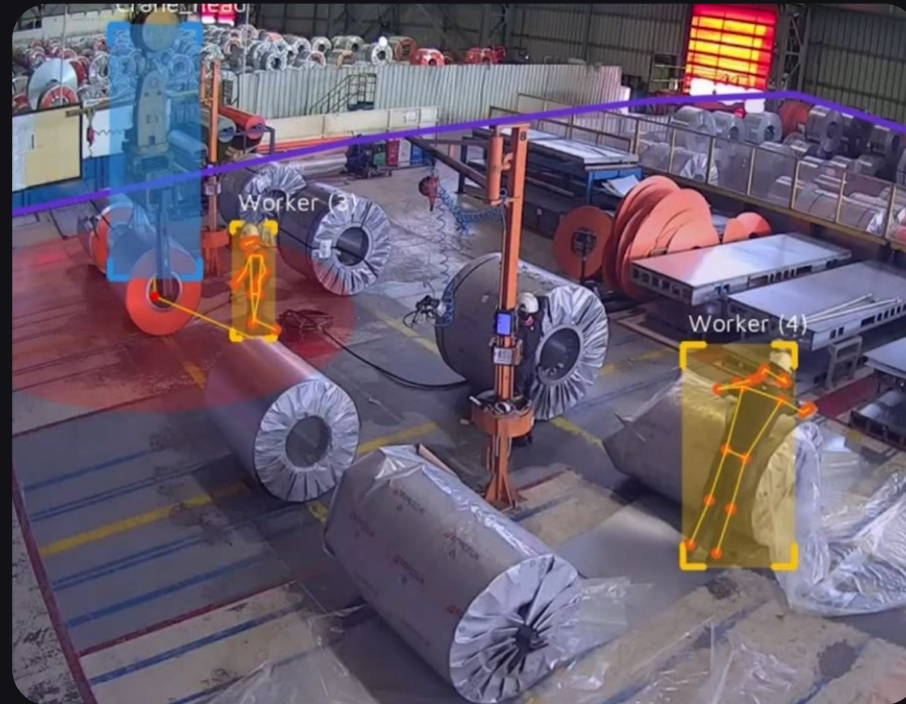


# 24/7 real-time Leading Indicators powered by **computer vision**



## **1 - Seeing the Unseen**

Capture workplace safety indicators, quantitatively, in real time, 24/7, with real-time alerts



## **2 - Time-to-Value**

Out-of-the box high accuracy AI models that cover 50+ EHS use cases supported by in-house EHS expertise



## **3 - Actionable Data**

Web based dashboard covering EHS reports, compliance management, and incident snapshots empowering data driven decision making

# Enterprise-ready excellence



## Proven and trusted across diverse industries



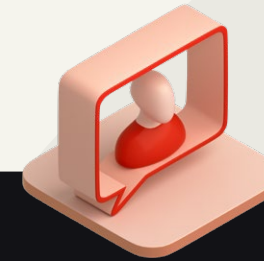
# Core AI

AI technology for wide-ranging EHS solutions.



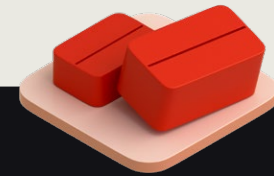
## Area controls

Crane area	Machine man restricted area	Safe lifting operation
Hot object detection	Maximum worker count	Static delimitation area
Light controls	Minimum worker count	Time limited area
Line of fire	Occupancy lighting	
Machine area control	Prohibited object detection	



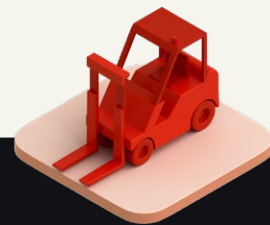
## Behavioral Safety

Climbing	Pedestrian way violation
Contact with electricity	Stairs bannister usage
Grouping	Worker down
Restricted height	
Running	



## Housekeeping

- Clean pedestrian ways
- Clean vehicle roads
- Leakage and spill
- Open/closed doors
- Unattended object



## Vehicle Controls

One way traffic	Vehicle operation zone	Vehicle-person interaction
Speed limit	Vehicle restricted area	Vehicle-vehicle interaction



## Pandemic Control

- Face mask
- Social distancing



## PPE

Apron	Glasses	Hard hat	Protective clothing	Mask
Cal suit	Gloves	Hearing muff	Reflective vest	Sleeve

# EHS Platform

Deploy cutting-edge computer vision in your workplace. Whether it's PPE usage, body positioning assessments, or vehicle interaction, our software is ready to work for you.



**Alert Analytics**



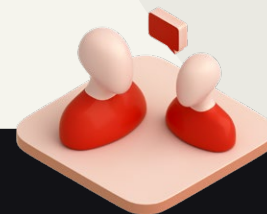
**Compliance Tracking**



**Visual Analytics**



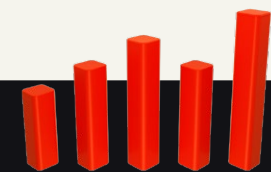
**KPI Tracking**



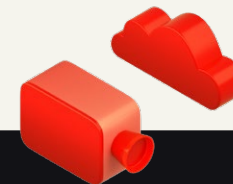
**Task Management**



**Accuracy Check**



**Reporting**



**Integration & Connectivity**

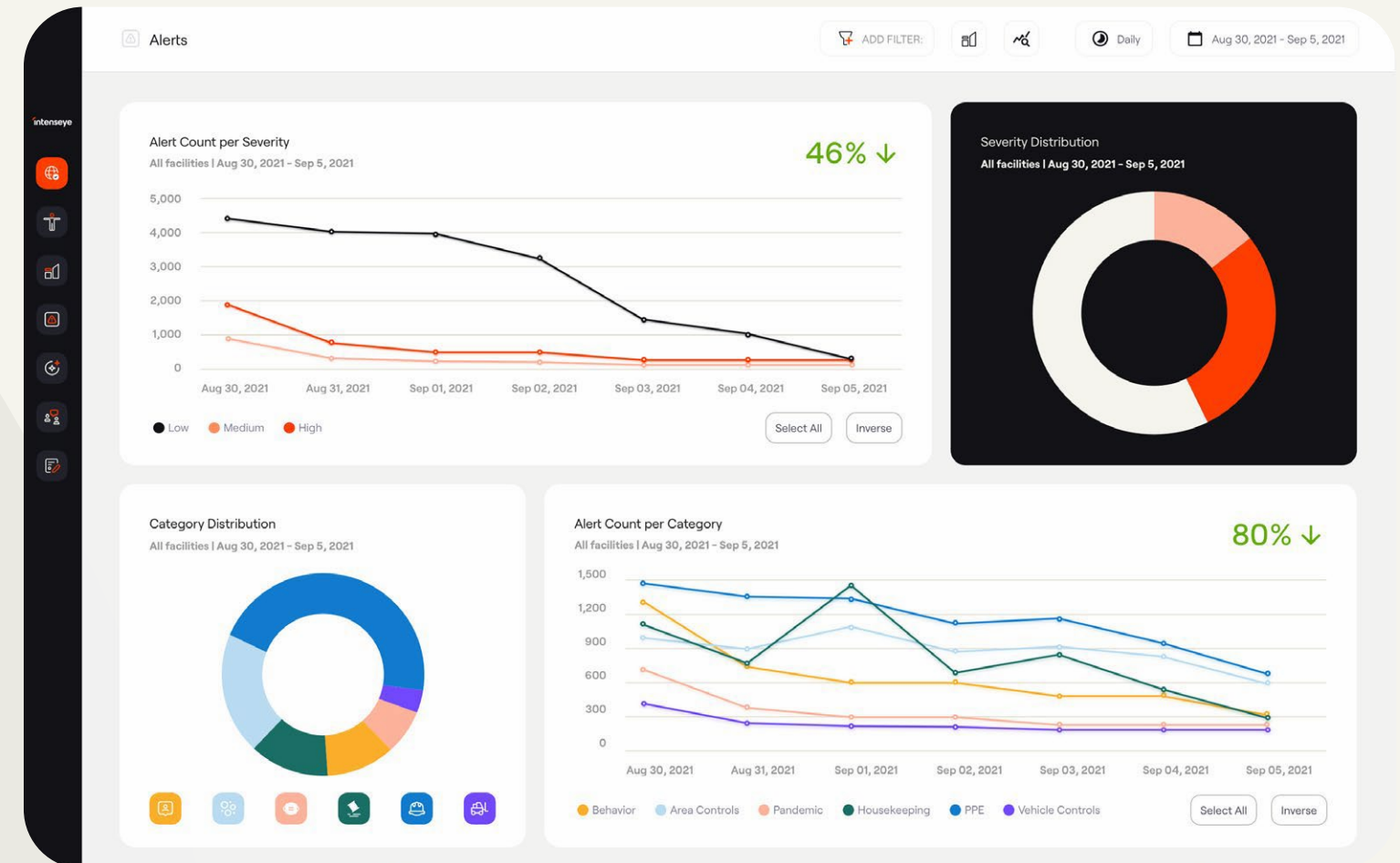


**E-mail & SMS Notifications**



# Alert Analytics

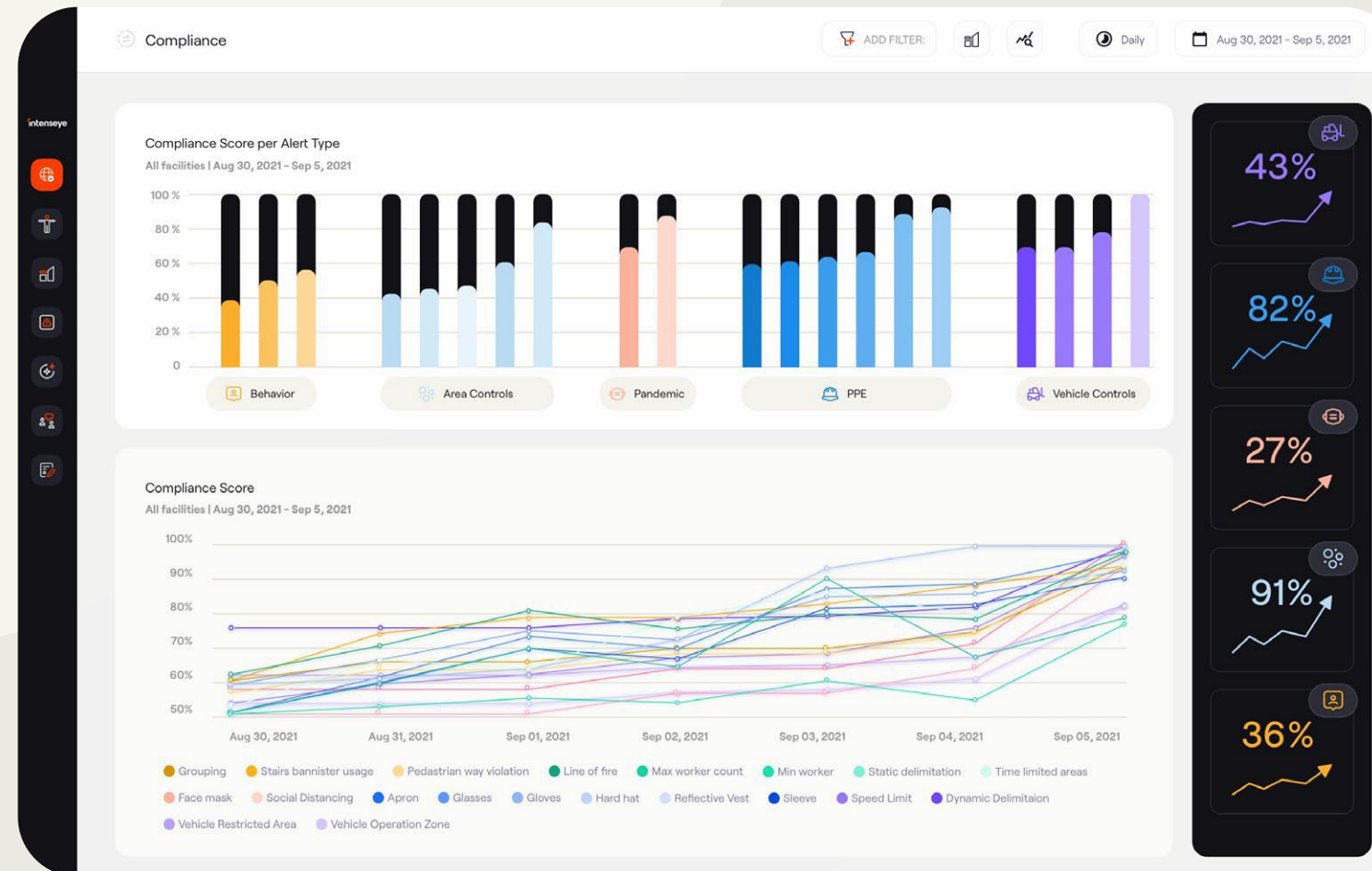
- Unsafe act/condition image or video footages
- Real-time and date filtered alert analytics
- Facility, camera and shift-based analysis for targeted actions
- Categorized events into low, medium, and high risks







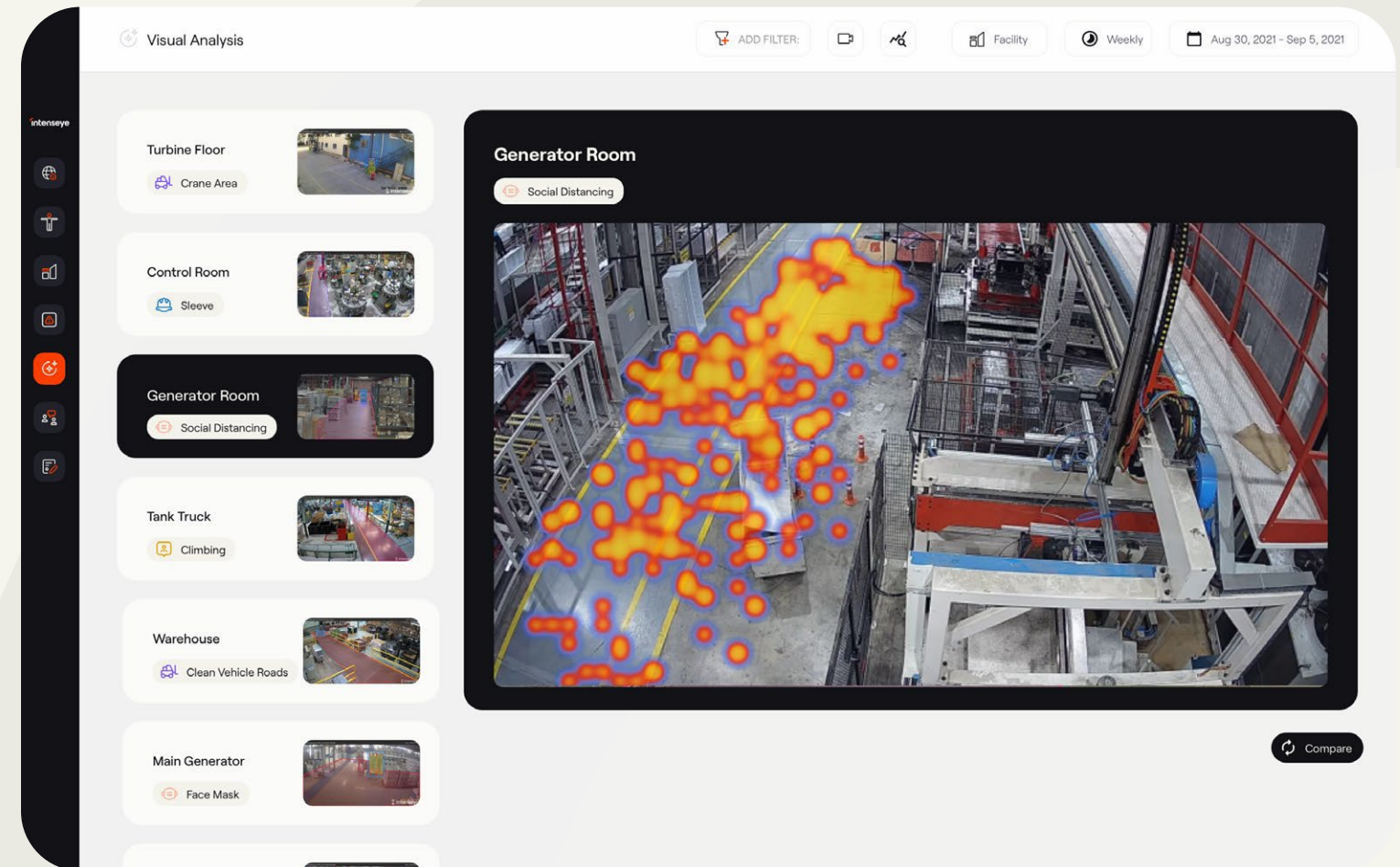
# Compliance Tracking



- Track and recognize safe behaviors
- Safe behaviors are integrated to determine the overall compliance score
- The facility, shift, and department-based compliance tracking

# Visual Analysis

- Heatmaps help to recognize areas of most concern
- Measure your action effectiveness by comparing heatmap trends over time
- Pathway analytics helps to understand high traffic areas





# Task Management

The screenshot displays a 'Task Management' dashboard with a top navigation bar including 'ADD FILTER', 'New Task', and various utility icons. The main content is organized into four columns:

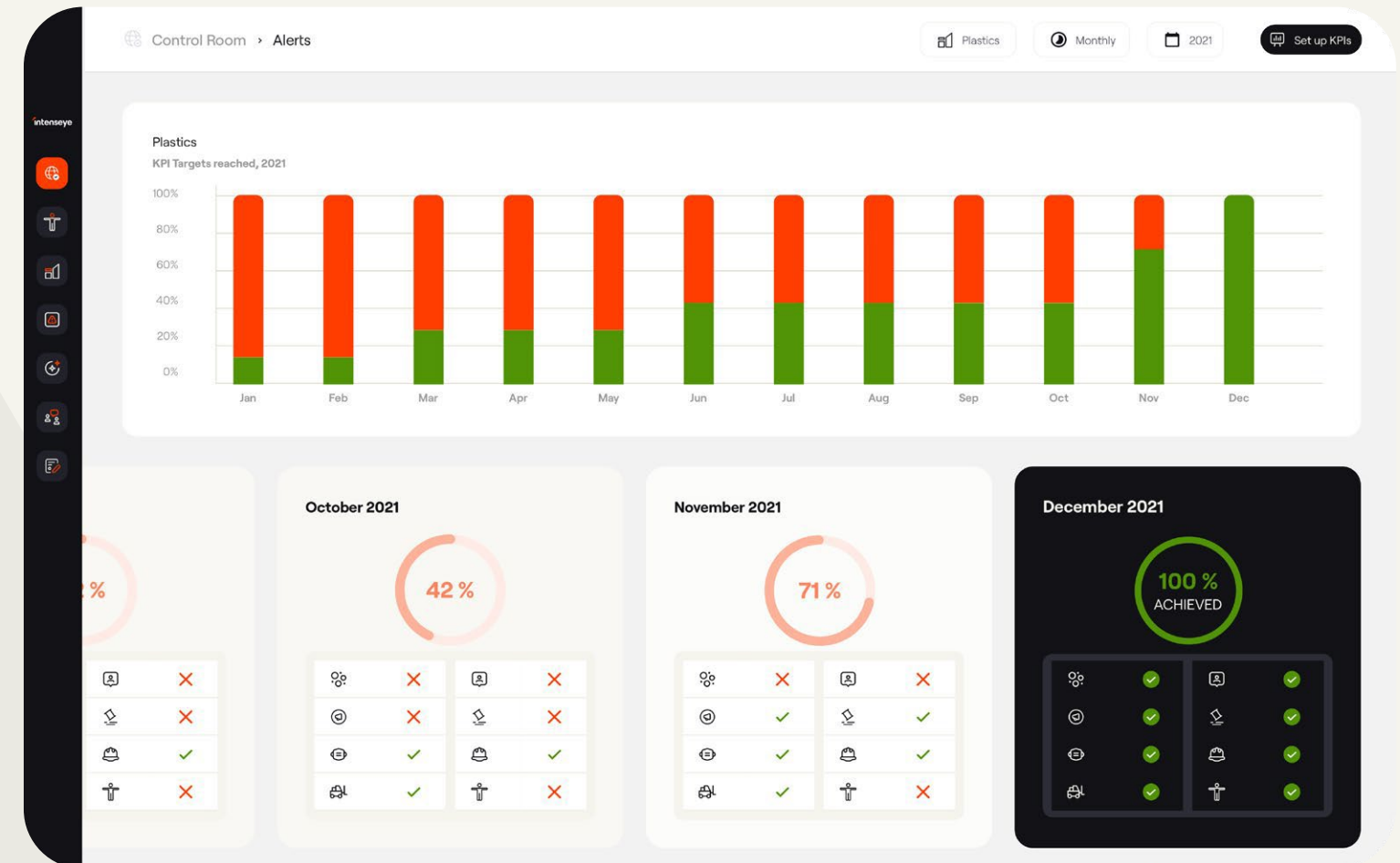
- TO DO:** Contains six task cards with dates ranging from Apr 09 to Aug 04. Tasks include 'Mask alert @ 10Aug21 | Amba IMF', 'Social Distancing alert @ 10Aug21 | Chittagong', 'Clean pedestrian ways alert @ 10Aug21 | Sovier ...', 'Min worker count in... alert @ 10Aug21 | Energy | C...', 'Clean vehicle road alert @ 10Aug21 | Consumer C...', and 'Alert Count @Aug15-Aug30'.
- IN PROGRESS:** Contains six task cards with dates ranging from Apr 11 to Oct 11. Tasks include 'Social Distancing alert @ 10Aug21 | Honduras S&T', 'Face Mask', 'Climbing', 'Time Limited Area', 'Clean pedestrian ways', and 'Fire Detection'.
- IMPACT OBSERVATION:** Contains six task cards with dates ranging from Mar 08 to Jun 03. Tasks include 'Alert Count @Aug15-Aug30', 'Social Distancing alert @ 10Aug21 | Energy | Hydroe...', 'Clean pedestrian ways alert @ 10Aug21 | Hanoi ...', 'Static Delimitation Area alert @ 10Aug21 | Gazipl...', and 'Clean pedestrian ways alert @ 10Aug21 | Steam ...'.
- SUCCESS STORIES:** Contains six task cards with dates ranging from Apr 01 to Aug 05. Tasks include 'Speed limit Alert @Aug15-Aug30', 'Compliance Chart @Aug15-Aug30', 'Alert Count @Aug15-Aug30', 'Clean pedestrian ways Alert @Aug15-Aug30', 'Social distancing Alert @Aug15-Aug30', and 'Clean pedestrian ways alert @ 10Aug21 | Steam ...'.

- Create actions directly in response to detected risks
- Easy task creation and assignment
- Action effectiveness and impact assessments following task completion



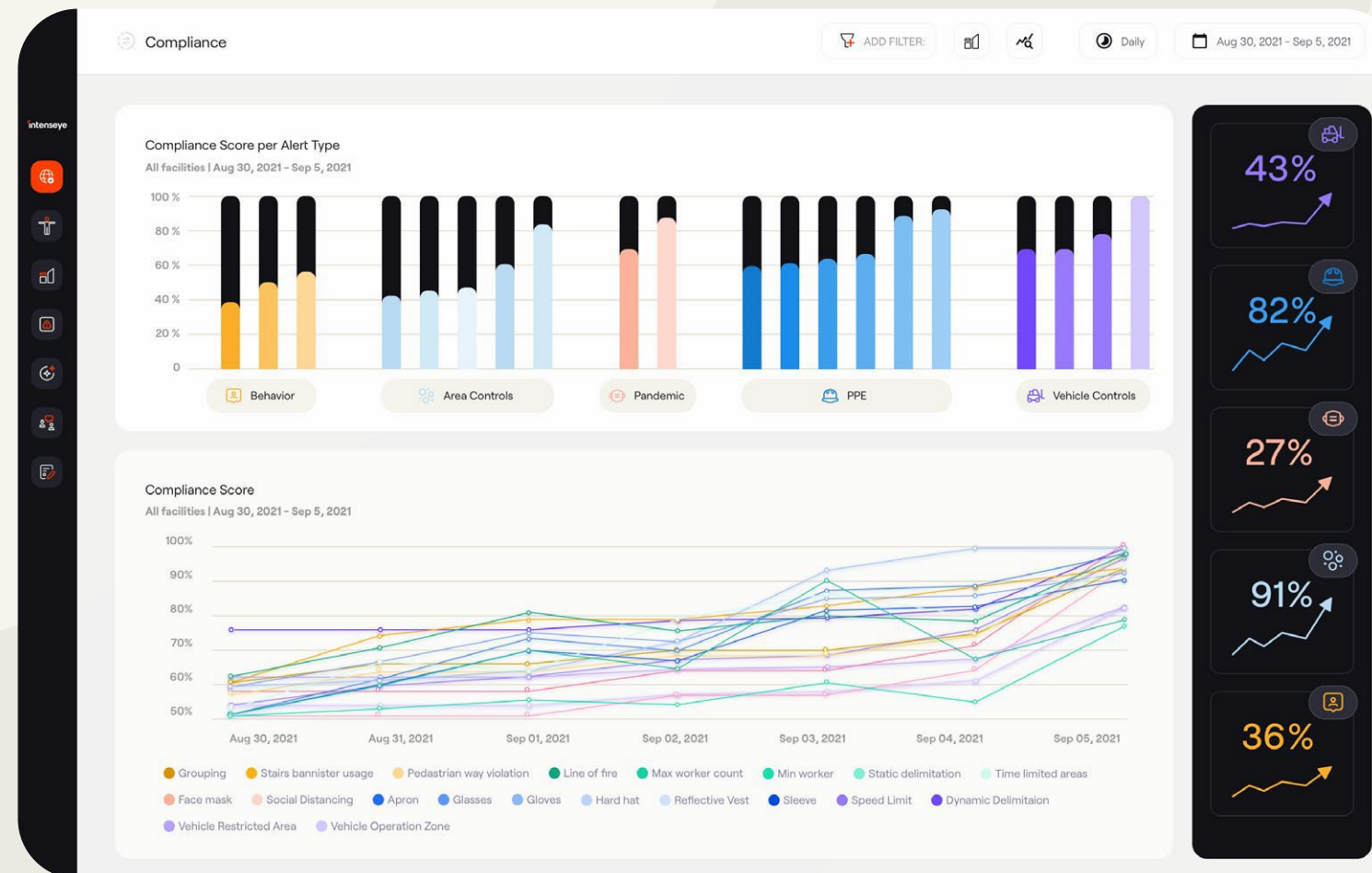
# KPI Tracking

- Preset health and safety KPI dashboard
- Filter KPIs by facility, time period, or shift
- Set, measure, and monitor progress on monthly goals





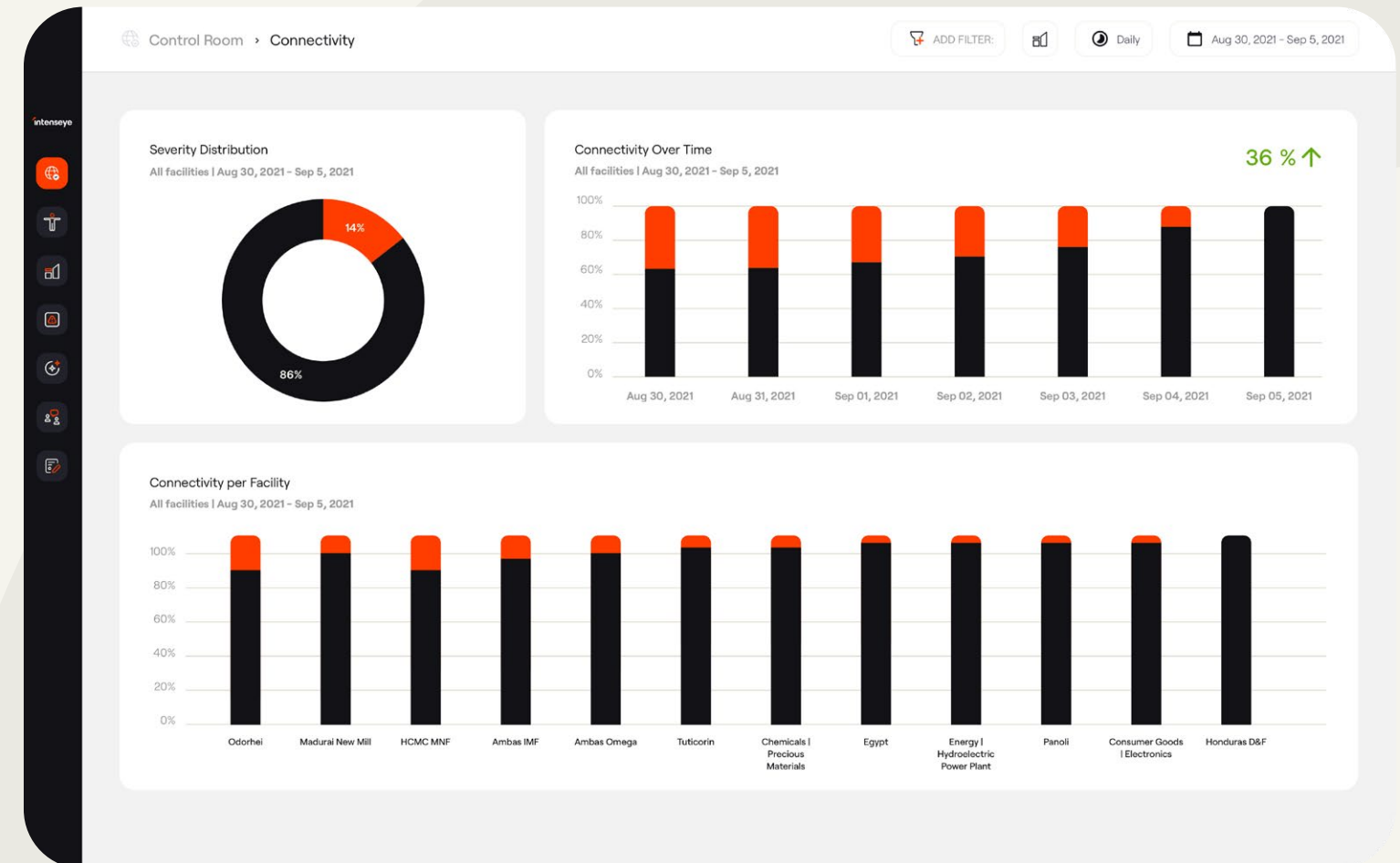
# Accuracy Check



- Transparent AI performance and accuracy metrics
- View accuracy rates by alert type and facility
- Weekly accuracy audit reports
- A dedicated internal team continuously validates your data and identifies any improvement opportunities.

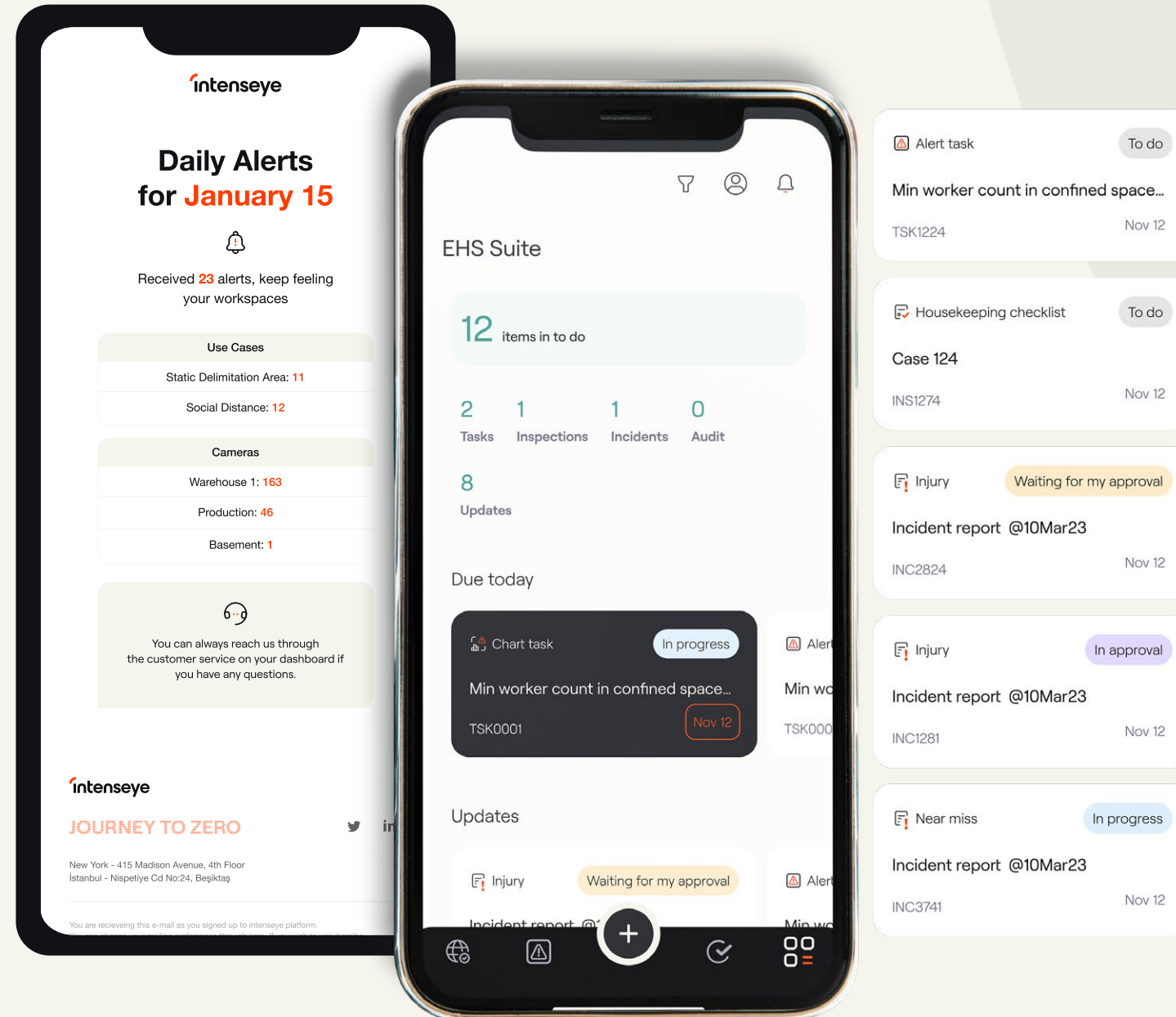
# Integration & Connectivity

- Seamless integration into your existing network of cameras
- Receive weekly camera connectivity health reports
- View camera connectivity status in real-time





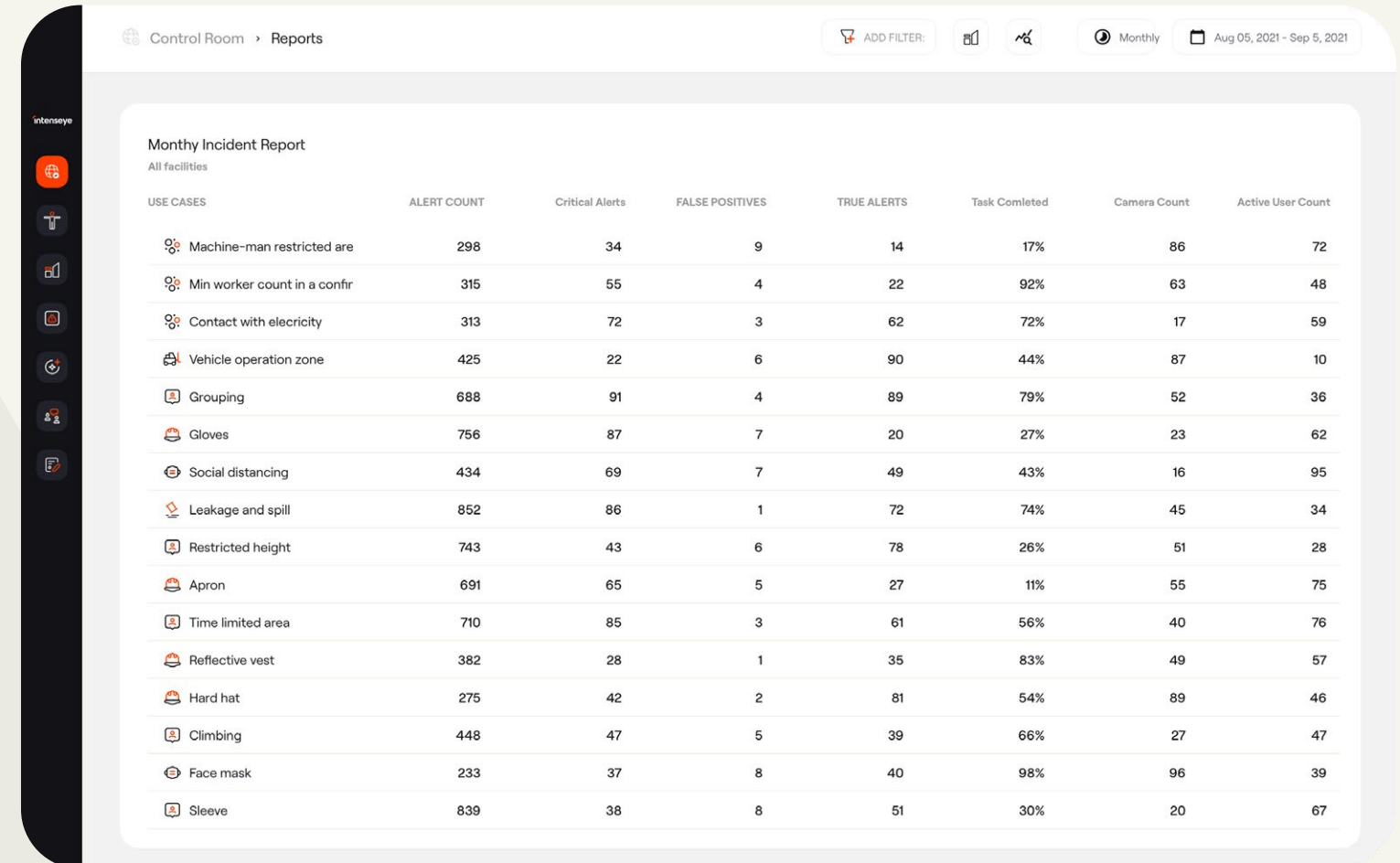
# E-mail & SMS Notifications



- Processing real-time streams of video data to quickly identify and alert of unsafe acts and conditions via e-mails and SMS.
- The facility, shift, department and people-based notification system for every use case.

# Reporting

- Automate the reporting of unsafe conditions and behaviors, help EHS teams evolve and take strategic measures against potential incidents.
- Bring all disciplines together with key performance indicators, team management and analytical data to create a safer work environment.



Control Room > Reports

ADD FILTER: [Icons] Monthly Aug 05, 2021 - Sep 5, 2021

### Monthly Incident Report

All facilities

USE CASES	ALERT COUNT	Critical Alerts	FALSE POSITIVES	TRUE ALERTS	Task Completed	Camera Count	Active User Count
Machine-man restricted are	298	34	9	14	17%	86	72
Min worker count in a confr	315	55	4	22	92%	63	48
Contact with electricity	313	72	3	62	72%	17	59
Vehicle operation zone	425	22	6	90	44%	87	10
Grouping	688	91	4	89	79%	52	36
Gloves	756	87	7	20	27%	23	62
Social distancing	434	69	7	49	43%	16	95
Leakage and spill	852	86	1	72	74%	45	34
Restricted height	743	43	6	78	26%	51	28
Apron	691	65	5	27	11%	55	75
Time limited area	710	85	3	61	56%	40	76
Reflective vest	382	28	1	35	83%	49	57
Hard hat	275	42	2	81	54%	89	46
Climbing	448	47	5	39	66%	27	47
Face mask	233	37	8	40	98%	96	39
Sleeve	839	38	8	51	30%	20	67



# Ergonomics



Trunk Position



Trunk Twisted Position



Trunk Side Bending



Lower Arm Position



Upper Arm Position



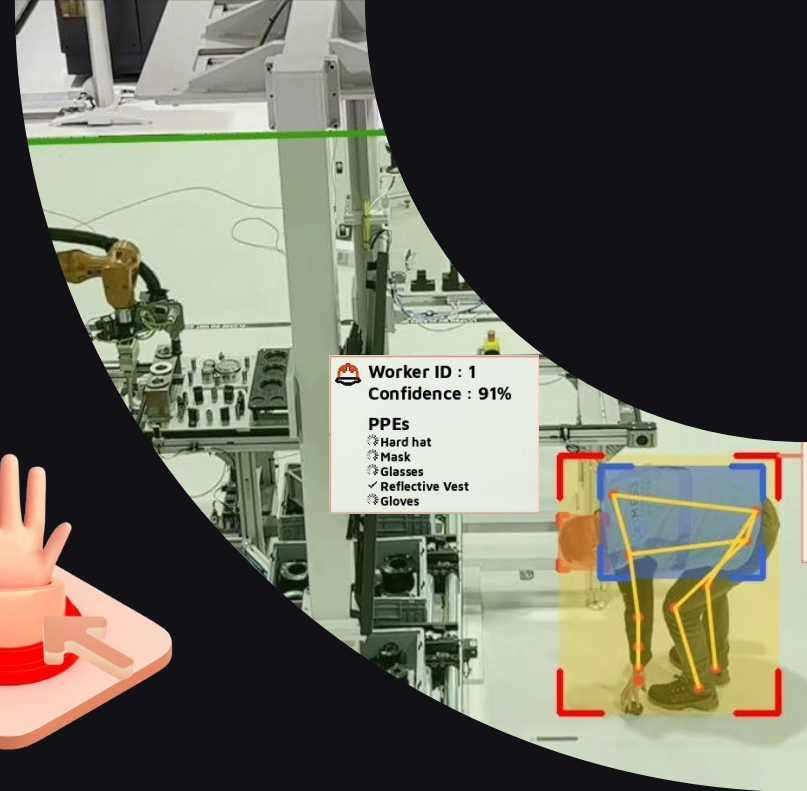
Arm Working Position



Neck Position



Neck Side Bending

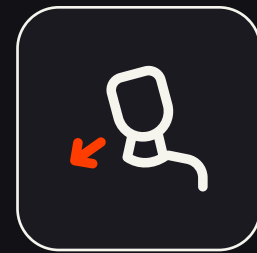


# REBA based analysis

The Rapid Entire Body Assessment (REBA) was developed to “rapidly” evaluate the risk of musculoskeletal disorders (MSD) associated with certain job tasks.



Neck Position



Neck bending



Neck twisting



Trunk position



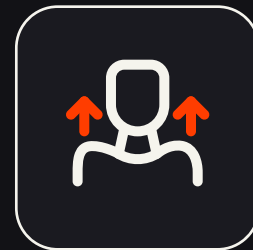
Trunk twisting



Trunk bending



Upper arm position



Raised shoulder,  
abducted arm



Lower arm position



Activity score

# RULA based analysis

The Rapid Upper Extremity Assessment (RULA) was developed to “rapidly” assess individual worker exposure to ergonomic risk factors associated with upper extremity MSD.



Neck Position



Neck bending



Neck twisting



Trunk position



Trunk twisting



Trunk bending



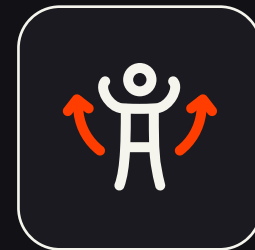
Upper arm position



Raised shoulder,  
abducted arm



Lower arm position



Muscle score  
for arms



Muscle score  
for arms

# Industrial integrations

Intenseye integrates with IoT devices, access systems, and both on-site and external APIs/Web Services to consolidate production data. Using advanced AI and computer vision, we elevate overall safety in your facilities.



## API / Web Service notifications

Intenseye delivers real-time notifications to your automation APIs, initiating unmanned on-site actions to mitigate EHS risks.



## IoT sensor integrations

Intenseye analyzes data from your IoT sensors with computer vision, crafting custom EHS use-cases and detecting noncompliance.



## LOTO analysis

Intenseye integrates with smart lock systems to prevent tailgating or bypassing into restricted zones, and verify facility personnel apply LOTO.



## Management System Integrations

Intenseye integrates with your compliance systems, exchanging data to offer a comprehensive EHS management powered by our high accuracy AI models.

# Life-saving technology

## 1 Unsafe action detected



Gloves alert



Speed limit alert

## 2 Smart device activated



Smart speakers and lights reminding of safety measures

## 3 Safety restored



Worker putting on gloves



Forklift slowing down



# Our commitment to **Ethical AI and Data Privacy**

Intenseye does not capture personally identifiable information from the visual data that we process. We exist to scale worker safety and protect their privacy.



Revolutionizing safety worldwide:

# **The fastest growing EHS software globally**

**22,000,000,000**

frames processed daily by real-time Safety AI



**25 +**

countries



**100K +**

workers kept  
safer



**15M +**

real-time  
notifications



**100+**

employees  
around the world



# Let's start our journey to zero together

## New York HQ

530 5th Avenue,  
New York  
NY 10036

Founded

2018

2020 Series Seed  
Investment

4M

2021 Series A  
Investment

25M



**intenseye**

→ [intenseye.com](https://intenseye.com)